

Jon Schueler *NEWS*

(1916-1992) *January 2019*



The Jon Schueler Estate thanks the [LewAllen Galleries](#), Santa Fe, NM for a beautiful exhibition (and catalogue), *Jon Schueler: Sky as Landscape*, in September 2018.

Storm, 1955, 46 x 48 inches (o/c 55-4)

was one of the paintings sold.

The late Linda Tarnay, dancer, choreographer and teacher at the [Tisch School of the Arts](#), generously bequeathed her Jon Schueler

September Blues, 1976, 18 x 24 inches (o/c 812)

to the [Grey Art Gallery](#), New York University, NY



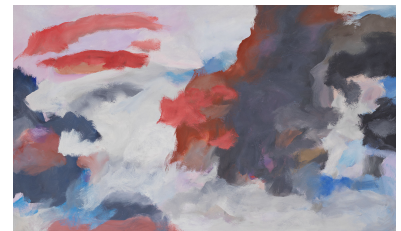
Two Schuelers, *The Sea is Red*, 1958 (o/c 58-44) and *North to Ornsay*, 1989 (o/c 824) are included in *25 Years of Collecting: The UW Art Museum Collection* in Laramie, WY (until January 26, 2019)

The exhibition *Lost Man Blues: Jon Schueler Art and War*, curated by Marisa Roth, tours through 2022. For bookings, please contact the Jon Schueler Estate.

The brochure with an essay by Marissa Roth is available.

Black, Red and Blues,

1985, 50 x 79 inches (o/c 1470)



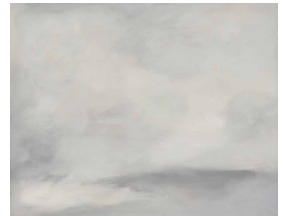
Schueler was brought up in Milwaukee, WI, receiving a BA and MA from the [University of Wisconsin at Madison](#).

3 paintings have been acquired by his home state through gallerist Dean Jensen who was retiring:



[Madison Museum of Contemporary Art](#), Madison, WI,
Counterpoint II, c.1960, 22 x 30 inches (dr. 60-53)

[Chazen Museum of Art](#), Madison, WI,
Shadow and Light Moving, III,
Romasaig, Scotland, April 1972, 40 x 48 in (o/c 263)



[Racine Art Museum](#), Racine, WI
Night Sky, August, III, Romasaig, Scotland,
July-Aug 1971, 48 x 42 inches (o/c 147)

[The Eskenazi Museum of Art](#), Bloomington, IN acquired
To What End Does This Achieve?, 1987, 44 x 66 inches (o/c1510)



Upcoming group exhibition:

Lens and Canvas: Catharsis from World War II, curated, and book (published by [Norfolk Press](#), CA) by Laura Whitcomb, at the [Foster Gwin Gallery](#), San Francisco, CA April-May 2019. One of the works from Schueler's time at the California School of Fine Art is:

Abstract, III, 1949, 18.75 x 23.75 inches (o/p 49-3)

