

Jon Schueler *NEWS*

(1916-1992) *June 2020*



[Waterhouse & Dodd](#) in London plans a showing of Schueler watercolors at some point in the future.

w/c 148 *Summer Song*,
14 ¼ x 22 1/4 in/36.20 x 56.50 cm,
watercolor on paper

Magda's Blues: II, 1979
79 x 120 in/ 200 x 304 cm, (o/c 1023)



BLUE at the [Nassau County Museum of Art](#) opened and closed on the same day in March! The museum plans to re-open in July and is extending the whole exhibition until Nov. 1, 2020. On display among stellar works selected by Director Charles Riley is this large Jon Schueler oil:

An online exhibition (curated by Victoria Keller), **Jon Schueler and Artists Who Painted the West Coast of Scotland** is now available: <https://bit.ly/3fFHgBf>

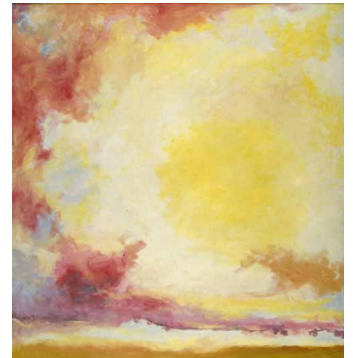


Yale Center for British Art, New Haven, CT

JMW Turner: *Staffa, Fingal's Cave*, 1931-32
35 ¾ x 47¾ /90.8 x 121.3 cm

National Galleries of Scotland

Jon Schueler: *A Yellow Sun*, 1958
79 x 73 in/200.66 x 185.42 cm (o/c 58-55)



[Art UK](#) photographed and catalogued the oil paintings in every museum and public art collection in Britain.



The exhibition of *Lost Man Blues: Jon Schueler—Art and War*, due to open on Nov. 5, 2020 at the Housatonic Museum of Art, Bridgeport, CT has been **postponed** due to the expected reintroduction of Covid-19 in the fall.

However, earlier this year, for six weeks, before having to close, *Lost Man Blues* at the Museum of Turtle Bay Exploration Park in Redding, CA received a wonderful reception.

Some visitors' comments:

"Oh my gosh! Beautiful and inspiring paintings."

"Loved the writings (the wall texts) as much as the amazing paintings. What a wonderful exhibit. Thank you."

"A difficult subject. So thought provoking." "Thank you for your light and dark."

